

# SpaceTech



**Sypla**  
INTERNATIONAL

# SpaceTech

Economic work environment



**The wide SpaceTech range offers versatile solutions. The system variants are mutually fully exchangeable and provide an aesthetic and stylish result.**



# Smart arrangement

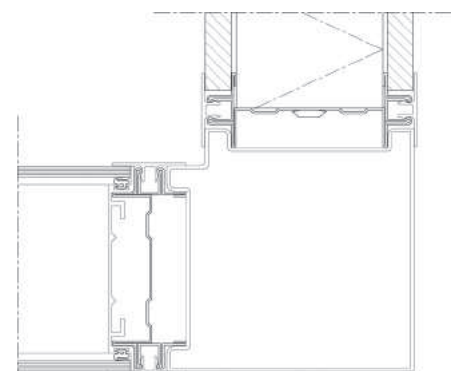
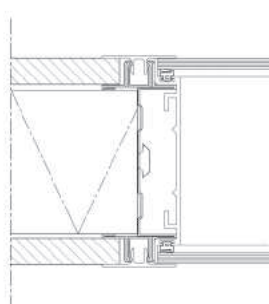
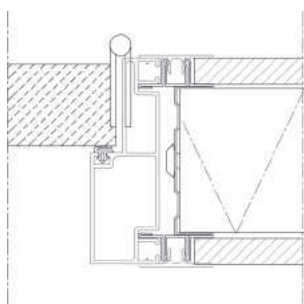
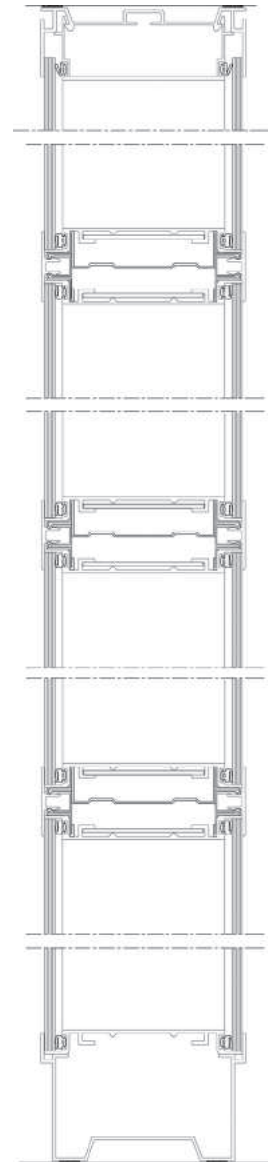
**SpaceTech is at home everywhere where effective work spaces must be created in a flexible manner whilst retaining the representative image. The layout of work spaces guarantees optimum productivity and their attractive design also contributes to a pleasant work climate.**



**A major feature of the SpaceTech system partition is its fast assembly time. Combined with the short delivery period this means that an area can be partitioned efficiently according to your wishes. Applying SpaceTech means choosing a versatile and functional (glass) solution which is aesthetically and economically sensible in almost any situation. Whether for a functional work area, a luxurious office or an industrial environment, a very wide choice of profiles continuously ensures a suitable and sleek-looking result. The sound-insulating and fire-resistant characteristics can meet high level requirements.**

# Specifications

+ Wall thickness	98 mm
+ Wall height	≤ 8.000 m <sup>1</sup> (max.)
+ In modules	≤ 3.000 m <sup>1</sup> variable (1.200 m <sup>1</sup> centre-to-centre standard)
+ Weight	2.5 kg/m <sup>2</sup> 3.9 kg/m <sup>2</sup> indicated weights of the system excludes fill-ins
+ Sound insulation	≤ 51 dB
+ Fire resistance	45 min.
+ Profiling	aluminium according to EN755-9 aluminium ceiling profile with integrated picture rail aluminium floor profile with recessed skirting in 3 designs aluminium profiled coping, smooth design or with plastic insert strip aluminium corner profiles in a square or rounded design aluminium door profiles in a square or rounded design
+ Finish	EV1 10 $\mu$ anodised according to Qualanod powder coating according to Qualicoat
+ Glazing	2-sided 4 to 7 mm glass
+ Panels	12.5 mm plasterboard/ cardboard panel with vinyl wallcovering 12.5 mm plasterboard/ cardboard panel with HPL finish 12 mm. laminated chipboard panel
+ Insulation	45 or 60 mm mineral wool
+ Doors	40 mm. obtuse design 8 to 10 mm toughened safety glass
+ Optional	LED lighting, desk tops, slats, window film, sliding doors, whiteboards, coloured, matt, fire-resistant, sound-insulating or safety glass, etc.

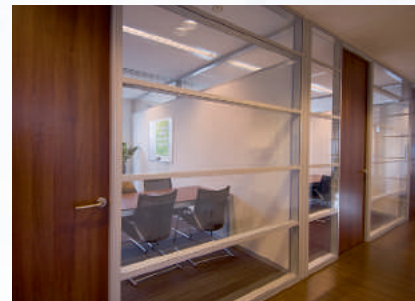


# Description

**Make :** Sypla International bv  
**Type :** SpaceTech

**Non-supporting, demountable and movable double-sided partition system for application as a floor-to-ceiling system partition.**

Partition system, thickness 98 mm, consisting of an electro-galvanised steel inner frame and an aluminium frame consisting of connection, corner, window and door profiles in a square and/or rounded design. The system is vertically accentuated by means of omega profiles which are clicked into steel Telelux studs to attach the panels or glazing.





Carlsonstraat 2 | 8263 CA Kampen | The Netherlands | P.O. Box 352 | 8260 AJ Kampen | The Netherlands  
t +31 (0)38 386 10 90 | f +31 (0)38 332 23 89 | @ info@sypla.com | w www.sypla.com